

GSM Multi function tracker and monitor



Content

Features	3
Specifications:	3
Keys and Parts.....	4
Quick start.....	5
SMS Command.....	5
Instruction.....	6

Features

1. Up to street level GSM cell ID tracking, with Google link direct web browser.
2. Voice active monitoring with super mini dimension.
3. Live land line monitoring when detect any call in/out and will call your master phone.
4. Built in adjustable sensitivity voice active microphone.
5. Built in High sensitivity monitoring amplifier microphone
6. Built in phone number filter function, other phone will not allowed to monitoring.
7. Can used SMS to set active or deactivate sound active mode.
8. Built in 3G-Sensor shock alert active function, will call and send SMS when detect shock alert.
9. Easy to operate, just install SIM card and SMS setting for all function modes
10. Built in earphone jack, allowed to communicate as spy device.
11. Built in rechargeable polymer LIION battery, with capacity up to 330mA and standby time up to 165Hours
12. Built in charger circuit allowed using in charge mode.

Specifications:

GSM Frequencies	GSM 850/ 900/1800 /1900 MHz
Voice sensitive	-75db
Standby current/time	2mAh/ 165Hours
Working current/ time	100mAh/3.3hours
G-Sensor	3G-Sensor
Phone line detection circuit	Digital detect
MIC sensitivity	4 sensitivity voice filter
Control mode	SMS control
Battery	3.7V 330mA
Charger power	DC 5V 500mA
Dimension	40x40x17mm
Weight	30g

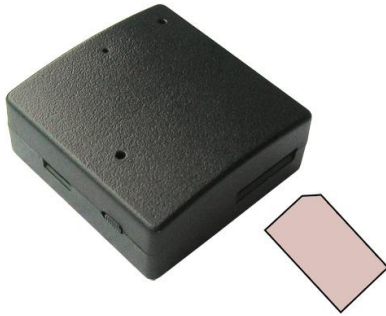
Keys and Parts



LED Indicators	Explanation
Red on	Battery is charging
Red off	Battery fully charged
Red led blink 1 time	voice detected alert active
Red led blink 2 times	3G axis detected alert
Red led blink 2 times	Phone line detected alert active
Blue led on	No SIM card or SIM card have a password
Blue led on 0.7 sec off 0.7 sec	GSM in no signal area
Blue led on 0.5sec off 3 sec	GSM registered successful

Quick start

A. Insert SIM card (SIM card must without any password)



B. Power ON, when the green LED indicator flash every 3 seconds for 0.5 second, that mean GSM network is already standby.

C. Setting first alert number

If he device password is 936 , The alert number is 0912345678

Sending the following SMS to the device.

936010912345678

Setting success return SMS: "0912345678" -->1"OK

SMS Command

SMS Command

Function	active	deactivate
Setting first alert number	01	
Setting second alert number	02	
Setting third alert number	03	
Voice active function	041	040
3G sock sensor function	051	050
Mic voice sensitive	060, 061, 062, 063	
Phone line active function	071	070
Ext detection active function	081	080
GSM tracking in google map	091	
all detect mode on/off	001	000
Phone Filter Function	111	110
Status Report	888	

Instruction

1. Setting Alert Number

Setting the alert number by sending SMS XXX##???? to the Target Phone:

XXX = device password

device password= last 3 digit of IMEI

912# secret report to get 3 digit code to the phone of SMS sender

##: 01=first phone number, 02=second phone number, 03=third phone number

?????= setting alert phone number

For example:

the device password is 936 First alert number:0912345678, Second alert number:0933169333,

Third alert number:0910223344

A. Setting first alert number

sending the following SMS to the device.

936010912345678

Setting success return SMS: "0912345678" -->1"OK



Send SMS to device

If you set successfully, will receive a SMS



B. Setting second alert number

Send SMS 936020933169333 to the device.

Setting success return SMS: "0933169333" -->2"OK

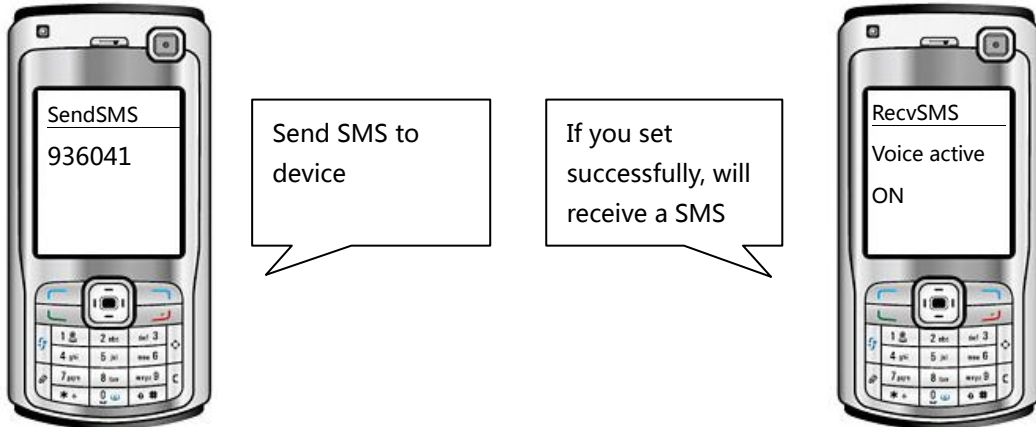
C. Setting third alert number

Send SMS 936030910223344 to the device.

Setting success return SMS: "0910223344" -->3"OK

2. Voice Active Function ON/OFF

- A. Active voice active alarm mode
Send SMS: 936041 to the device
Setting success return SMS: Voice active ON



- B. Deactivate voice active alarm mode
Send SMS: 936040 to the device
Setting success return SMS: Voice active OFF

3. 3G Shock Sensor Function ON/OFF

- A. Active shock active alarm mode
Send SMS: 936051 to the device
setting success return SMS: Vibration Detection ON
- B. Deactivate shock active alarm mode
Send SMS: 936050 to the device
Setting success return SMS: Vibration Detection OFF

4. Setting Voice Sensitive Sensor

- A. Send SMS: 936060 to the device
Setting success return SMS: MIC sensitivity low
- B. Send SMS: 936061 to the device
Setting success return SMS: MIC sensitivity standard
- C. Send SMS: 936062 to the device
Setting success return SMS: MIC sensitivity high
- D. Send SMS: 936063 to the device
Setting success return SMS: MIC sensitivity highest

5. Phone Line Active Function ON/OFF

- A. Active phone line active function
Send SMS: 936071 to the device
Setting success return SMS: Phone line detect ON
- B. Deactivate phone line active function
Send SMS: 936070 to the device
Setting success return SMS: Phone line detect OFF

6. External Detection Function ON/OFF

- A. Active external detection function
Send SMS: 936081 to the device
Setting success return SMS: EXT Detection ON
- B. Deactivate external detection function
Send SMS: 936080 to the device
Setting success return SMS: EXT Detection OFF

7. Report GSM base in google map URL

Send SMS: 936091 to the device

Setting success return SMS :

Device is about : CID= xxx ,LAC=xxx , address <http://maps.google.com/xxxxxxxxxxxxxxxxxxxx>

If Alert Number is setting , call to device ring 1-2 time hang off will reply Location to Alert Number

8. All Alert Detection ON/OFF

- A. Active all alert detection
Send SMS: 936001 to the device
Setting success return SMS: All detection alert ON
- B. Deactivate all alert detection
Send SMS: 936000 to the device
Setting success return SMS: All detection alert OFF

9. Phone Filter Function ON/OFF

- A. Active phone filter function
Send SMS: 936111 to the device
Setting success return SMS: Phone filter function ON
- B. Deactivate phone filter function
Send SMS: 936110 to the device
Setting success return SMS: Phone filter function OFF

10. Status Report

Get setting status

Send SMS: 936888 to the device

setting success return SMS:

STATUS:

MIC ALERT=OFF high

3G SHOCK =OFF

Ext =ON

Phone line =ON

PHONE FILTER=OFF (ON)

Alert:

1: 0912345678

2: 0912398778

3: 0912312345

BATTERY=75

IMEI : 35xxxxxxxxxxx

MIC ALERT=OFF high → For microphone voice active status

3G SHOCK =OFF → For shock alert status

Ext =ON → For external input

Phone line =ON → For phone line detection

PHONE FILTER=OFF → For phone filter status

Alert: → Number filter allowed to monitor

1: 0912345678

2: 0912398778

3: 0912312345

BATTERY=75 → Current battery level in%

IMEI : 35xxxxxxxxxxx → Device IMEI number

Note :

- Voice alert SMS: **Voice active alert** and then call to alert number after call will stop 3 min detection
- Vibration alert SMS : **3G Shock active alert** and call to alert number after call will stop 5 min detection
- Line alert : **Phone line active alert** and call to alert number